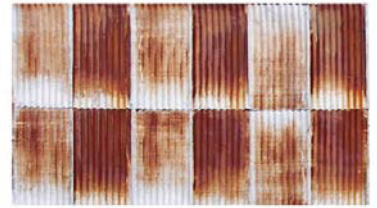


BACK OF BUILDING
Align this center window with the center of the back of your building.



FRONT OF BUILDING
Note: This building has a false front

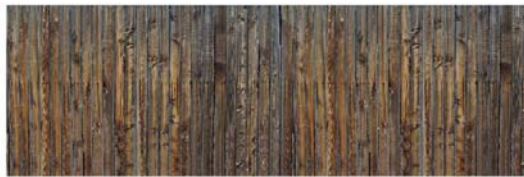
Extra materials to use as optional roof patch, wall patch, etc.



Back of False Front



Roof Material for the Hunting Shop. You will want to cut the material in half to orient it for both roof slopes. To add dimension, try cutting between a few shingles here and there and lifting the edges up



PORCH FLOOR
If you wish, you can cut a few boards out and put black paper under the porch floor.

PORCH ROOF
If you wish, cut a few shingles out and back this porch roof with black paper. This roof is located above the front door and windows. We used two "weathered" balsa wood supports to hold up the porch roof.

These Materials were all printed directly from the Model Builder Program
Get your copy of Model Builder and Start Building Today!